



My nature connection

MY HOME,
THE BIOMES

GRADES: 3-8

TIME: 20 minutes

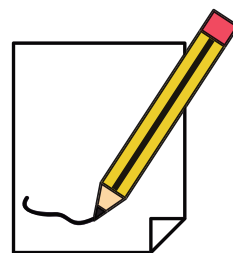
WHICH BIOME DO YOU LIVE IN?

Take a look at the plants and animals around your home. Those things can indicate which biome you live in. For example, you live in a conifer biome if you see pine trees, and you live in a deciduous biome if the trees around you lose their leaves in the fall!

MINNESOTA'S FOUR BIOMES

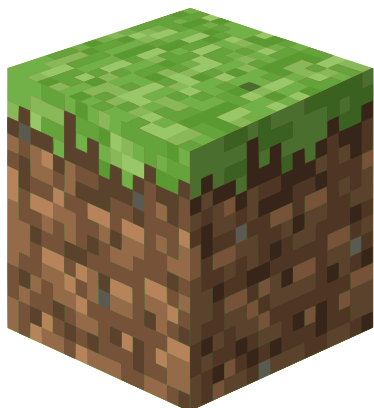
WHAT YOU'LL NEED

Pen or Pencil

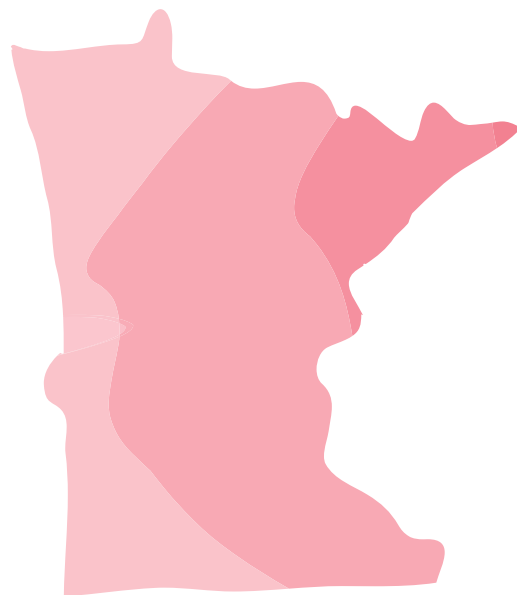


WHAT IS A BIOME?

A biome is a place where specific plants and animals live and grow. Minnesota is fortunate to be located in the part of the United States where four major biomes cross over each other. These biomes all range in terms of plants and animals present, climate, and growing seasons. Since Minnesota has so many varying climates and regions, we are able to observe a wide variety of plants and animals within our state!



Think about the videogame Minecraft. When you look for a spot to build a home, what do you see? Maybe you find yourself in the snowy tundra where the wolves roam. Or maybe you land in the sandy desert among cacti and bushes. Which biomes in Minecraft remind you of the ones you've seen in Minnesota?



CONIFER FOREST BIOME

Coniferous trees grow in a wide range of climates and are commonly found in the northern part of our state. Coniferous trees succeed in this type of biome because they're adapted to take advantage of conditions that other trees cannot. Conifers specialize in growing in poor soils that are often sandier and drier than the richer soils found in deciduous forests. You can find pine trees and other needle trees in this biome.



DECIDUOUS FOREST BIOME

Deciduous forests are biomes that are classified by the seasonal weather patterns they experience. This biome experiences all four seasons and the trees lose their leaves each fall and winter.

Animals and other plant life in these regions have developed special ways to deal with the absence or presence of leaves above them. The living things in this biome have adapted to varying amounts of sun and shade over the course of a year through traits like hibernation and seasonal flowering patterns.

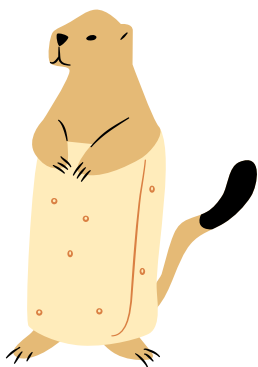
TALLGRASS ASPEN PARKLAND BIOME

This biome is just 2 million acres, making it our smallest biome in Minnesota. The Tallgrass Aspen Parkland features open grasslands studded with aspen tree groves, dense shrub thickets, wetlands and peatlands. Marking the transition between tall grass prairie and forests, these systems support an impressive variety of species. You can find Minnesota's only herd of elk roaming here, along with tall aspen trees that can fight against the harsh winds.



PRAIRIE GRASSLAND BIOME

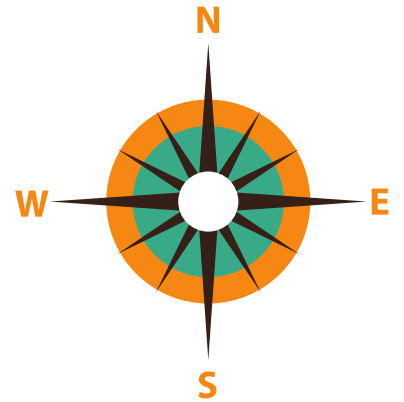
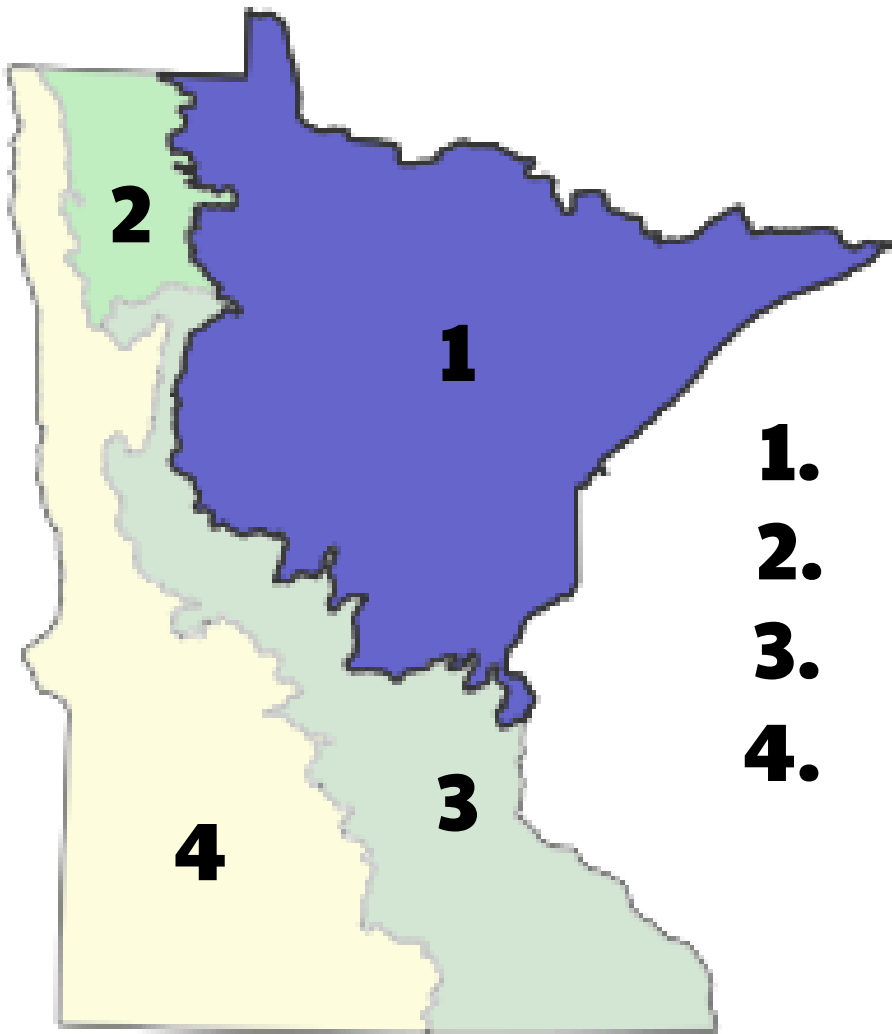
The grassland biome is made up of large open areas of grasses. They are maintained by grazing animals and frequent wildfires. Types of grasslands include savannas which are also found in parts of Africa and Australia. The Temperate Grasslands of Minnesota are found all over North America and Eastern Europe.



Biome Challenge

Now that you've learned all of Minnesota's biomes, try to label them correctly! Use clues found in each biomes description to help you label the map on the following page.

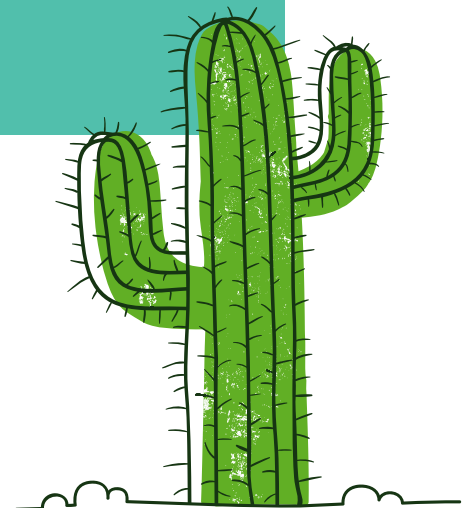
CHALLENGE: CAN YOU LABEL THE BIOMES CORRECTLY?



- 1.
- 2.
- 3.
- 4.

Look for the answer key above additional resources.

What other biomes can you think of?
Which animals and plants live there?



CONNECTING WITH QUESTIONS

Which biome have you never been to before?

Have you ever wondered what it would be like to live in a different part of the world? What would the weather be like? What kinds of animals would you see? Which plants live there?

ANSWER KEY TO CHALLENGE: 1. CONIFER FOREST 2. TALLGRASS ASPEN PARKLAND 3. DECIDUOUS FOREST 4. PRAIRIE/ GRASSLAND

ADDITIONAL RESOURCES

Coloring Sheet provided by the DNR:

https://files.dnr.state.mn.us/education_safety/education/forestry/biomes/mn-biomes-coloring-map.pdf

<https://earthobservatory.nasa.gov/biome>

SURVEY FEEDBACK

Please help us and give us your feedback.

INSERT LINK